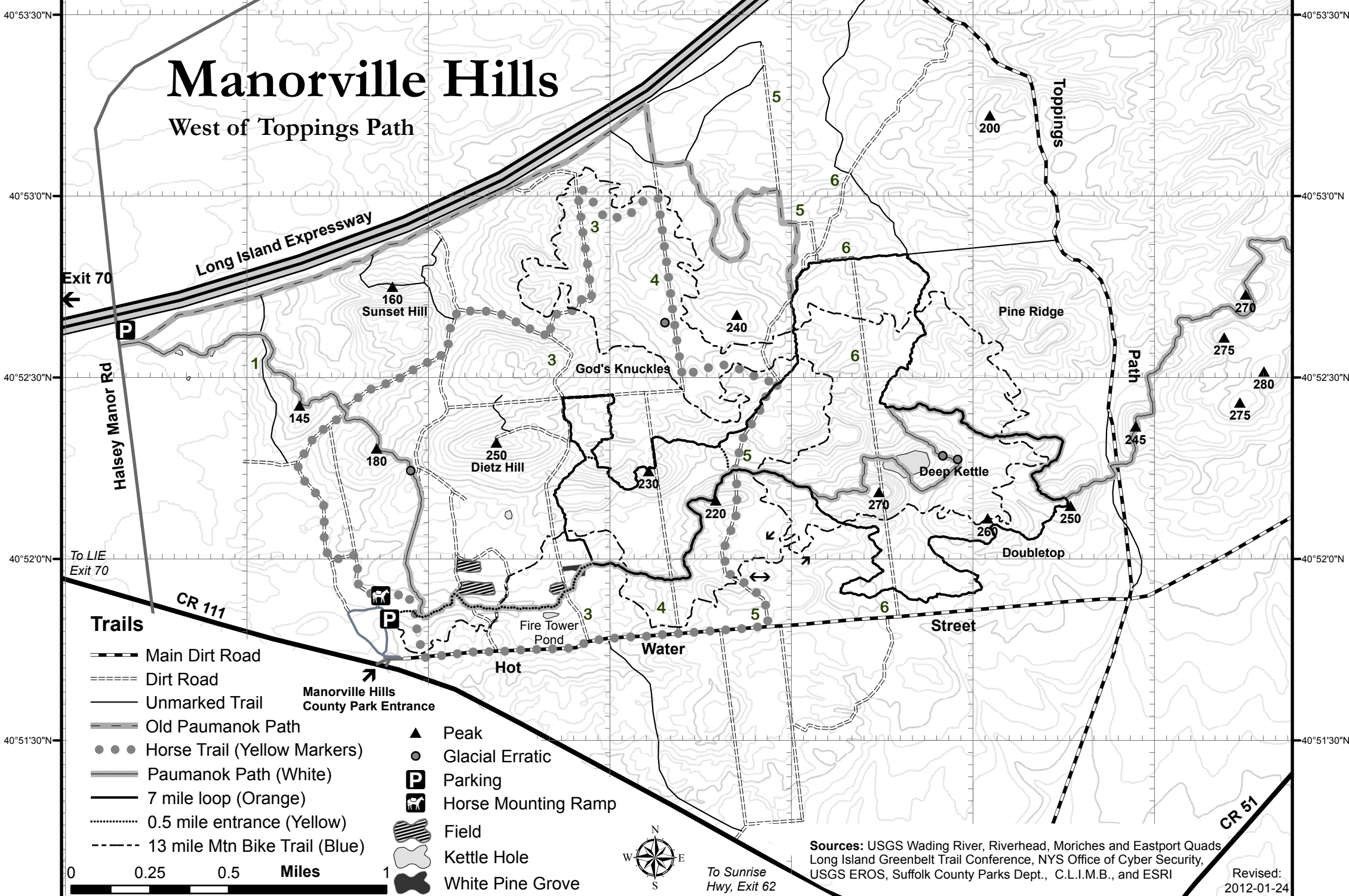


72°47'0"W 72°46'30"W 72°46'0"W 72°45'30"W 72°45'0"W 72°44'30"W 72°44'0"W

Copyright (C) 2011 David Waring

Manorville Hills

West of Toppings Path

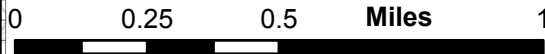


Trails

- Main Dirt Road
- Dirt Road
- Unmarked Trail
- Old Paumanok Path
- Horse Trail (Yellow Markers)
- Paumanok Path (White)
- 7 mile loop (Orange)
- 0.5 mile entrance (Yellow)
- 13 mile Mtn Bike Trail (Blue)

Manorville Hills
County Park Entrance

- Peak
- Glacial Erratic
- Parking
- Horse Mounting Ramp
- Field
- Kettle Hole
- White Pine Grove



To Sunrise
Hwy, Exit 62

Sources: USGS Wading River, Riverhead, Moriches and Eastport Quads
Long Island Greenbelt Trail Conference, NYS Office of Cyber Security,
USGS EROS, Suffolk County Parks Dept., C.L.I.M.B., and ESRI

Revised:
2012-01-24

72°47'0"W 72°46'30"W 72°46'0"W 72°45'30"W 72°45'0"W 72°44'30"W 72°44'0"W